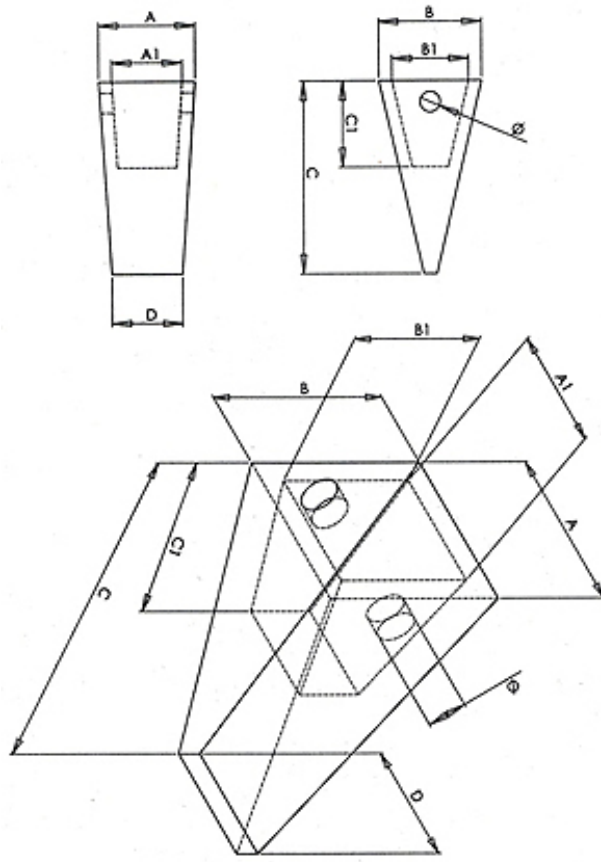










Drawing : Adapter(mm)



Drawing : Tooth (mm)

P/N	TYPE	Model	U/W KG	A /mm	B/mm	C/mm	D/mm	A1/mm	B1/mm	C1/mm	holes	Stock qty	Picture
SK200	Tooth	SK200	5.2	106	91	208	90	81	67	97	23		
SK200RC	Rock chisel	SK200	4.9	105	92	234	34	80	67	101	25		
BF01P (30mm)	Adapter	SK200	9.7	103	87	325		79	62	97	19.5		
SK230	Tooth	SK230	7.1	120	111	235	97	89	78	117	25		
SK230RC	Rock chisel	SK230	8.8	120	116	280	51	90	79	117	25		

AF01L (35mm)	Adapter	SK230	11.9	111	100	375		89	73	112	23		
SK350RC	Rock chisel	SK350	10.1										
SK200R	Side cutter	SK200	14.6	313	50	386					17.5		
SK200L	Side cutter	SK200	14.6	313	50	386					17.5		